

MODE OF ACTION

KemTRACE[®] Chromium, the first product of its kind on the market, is a safe, proven trace mineral for use in dairy cattle.

KemTRACE Chromium is a water soluble, highly bioavailable, organic source of chromium propionate that helps stabilize insulin receptors in cattle. This improves glucose utilization for increased energy and proper cell function, resulting in better animal maintenance, reproduction, growth and immunity. The net benefit is increased production and profitability in dairy cattle.

Insulin is the key

Insulin plays a key role in optimum cell function by acting as a “key” in the lock to the door that allows glucose into the cell. Chromium supplementation primarily acts to improve insulin sensitivity so more glucose can enter the cell. The additional glucose allows more energy to be available for proper cell function.

What can a cow do with more energy?



Withstand effects of heat stress



Reduce negative energy balance



Improve reproductive efficiency



Improve milk production



Improve immune function



KemTRACE[®] CHROMIUM

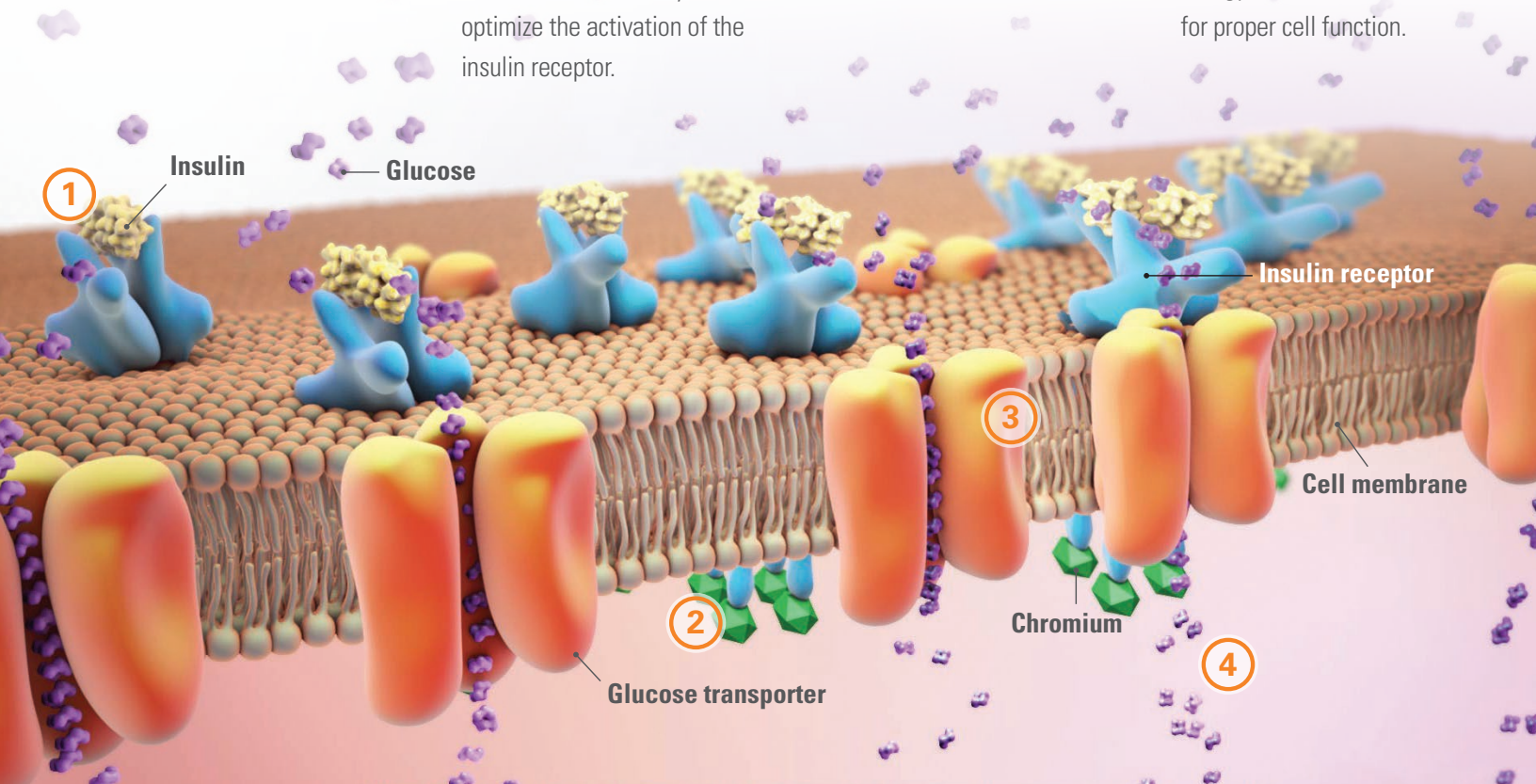
MODE OF ACTION

① Insulin stimulates glucose uptake.¹

② Readily available chromium propionate from KemTRACE[®] Chromium is necessary to optimize the activation of the insulin receptor.

③ Glucose is taken in by the cell.

④ The additional glucose will allow for more energy to be available for proper cell function.



KEMIN

KemTRACE[®]
CHROMIUM
Essential to you and your operation.

kemin.com/chromium

1. Weekes, T. E. C. (1991). Hormonal control of glucose metabolism (symposium paper). 7th International Symposium on Ruminant Physiology, 183.