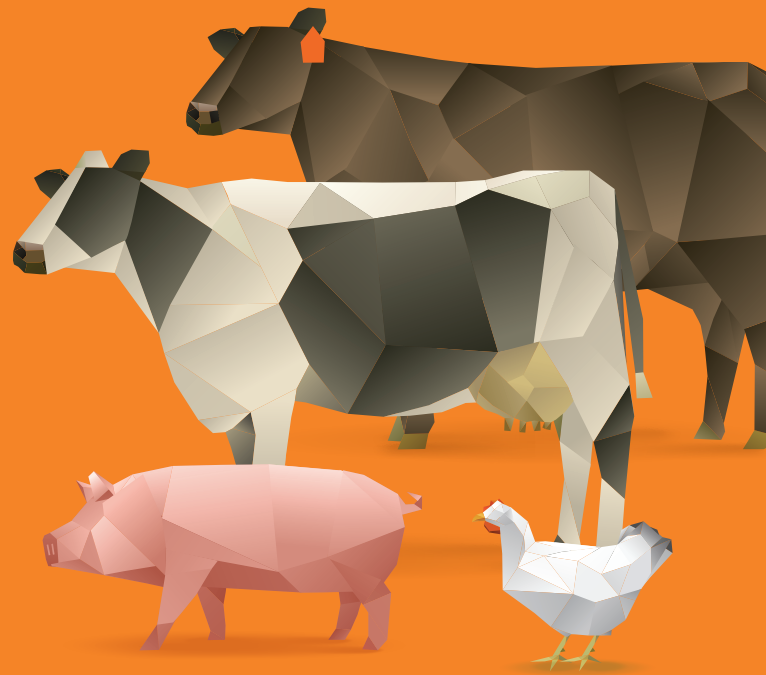




# KemTRACE® Chromium: THE FIRST OF ITS KIND. THE FIRST IN ITS CLASS.

KemTRACE Chromium — the first product of its kind on the market — is a safe, proven trace mineral for use in swine, dairy, beef and broiler operations. This highly bioavailable, organic source of chromium helps improve glucose utilization for increased cellular energy and function. This results in better animal maintenance, reproduction, growth and immunity. KemTRACE Chromium has been fed to millions of animals around the world since its introduction in 2000. It is registered in more than 30 countries and is the only U.S. Food and Drug Administration-reviewed form of chromium propionate.



## WAYS KEMIN ENSURES QUALITY AND SAFETY

KemTRACE®  
**CHROMIUM**  
*Essential to you and your operation.*

### 1. **Kemin Knows Chromium**

Only Kemin has invested more than 20 years and millions of dollars toward scientific research, validating the benefits of chromium propionate while bringing this essential trace mineral to millions of animals around the globe.

Kemin is the world's largest producer of chromium propionate and has conducted more than 50 U.S. chromium research trials in order to add further assurances regarding product safety, efficacy and traceability. Our rigorous regulatory approach demonstrates our commitment to safety and science.

### 2. **Commitment to Quality**

KemTRACE Chromium is manufactured under strict quality control and quality assurance specifications from materials all sourced in the United States. Kemin has optimized the manufacturing process and maximized product safety and traceability.

Kemin maintains a Food Safety System Certification (FSSC) 22000, recognized under the Global Food Safety Initiative, for

its manufacturing facility in Des Moines, Iowa. This is designed to deliver:

- Greater confidence in food supply
- Fewer health risks
- Improved brand protection
- Improved supply chain management

### 3. **Add It With Confidence**

Kemin manufactures chromium propionate that meets the food additive standards published in 21 CFR 573.304. KemTRACE Chromium has U.S. clearance as a feed additive for use in swine, dairy, beef and broilers and is the only U.S. Food and Drug Administration-reviewed form of chromium propionate.

### 4. **Confidence Starts in the Laboratory**

The quality and safety of our products is paramount at Kemin and processes are in place for testing not only our final products, but also our raw materials. CALTAX is a Kemin laboratory dedicated to evaluating our raw materials before being released to manufacturing. With CALTAX, we have standards in place to evaluate our raw materials and possible hazards,

so we're confident in the supplier's raw material formulas. With our quality control program, customers can have confidence we understand our technology, how our molecules work and that the ingredients are safe and efficacious.

### 5. **Technical Expertise at Every Turn**

At Kemin, we are devoted to ensuring customers receive trusted nutritional advice when evaluating animal performance. KemTRACE Chromium is supported by our technical service team comprised of respected Ph.D. nutrition and animal health experts with an array of valuable experience in research and production. The Kemin technical service and sales teams work together to use applied knowledge and industry experience to ensure what is discovered in our labs is applied to customers' operations and can yield the highest possible return on investment.

To learn more, visit  
[Kemin.com/Chromium](http://Kemin.com/Chromium)