

**KEMIN IS THE SCIENCE BEHIND**

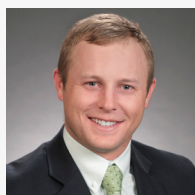
# Healthier Cattle

Kemin Animal Nutrition and Health is a family-owned and-operated, science based partner in the industry headquartered in **Des Moines, Iowa**. We are compelled to meet the global demand for safe animal protein and support producer's bottom line while doing so. At Kemin, our curiosity energizes us to innovate, test, and create new products and services that enhance overall animal nutrition, health, and welfare. From novel feed ingredients to essential nutrients, our innovations help producers raise healthy livestock and poultry today — and build a resilient foundation for the future.



## Meet Your Kemin Beef Team

Our beef team at Kemin Animal Nutrition and Health is made up of technical experts, sales, marketing, and more, all with the common goal to serve the industry and help producers and managers maximize the full production potential on beef operations.

**Tyler Leonhard**

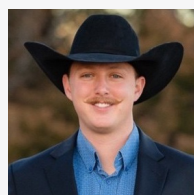
US Beef Business Manager  
tyler.leonhard@kemin.com  
785-210-7556

**Landon Canterbury, MS**

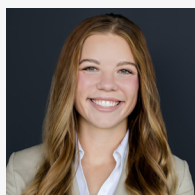
Technical Services Manager  
landon.canterbury@kemin.com  
719-371-5430

**Brent Karstens**

Key Account Manager  
brent.karstens@kemin.com  
402-203-4495

**Seth Murphree**

Beef Account Representative  
seth.murphree@kemin.com  
806-290-2333

**Emily Hoefling, MS**

Beef Account Representative  
emily.hoefling@kemin.com  
712-251-3509

**Erin Chalupa**

Beef Marketing Manager  
erin.chalupa@kemin.com  
319-330-0271



**DIVE INTO THE  
HISTORY OF KEMIN**



**EXPLORE KEMIN'S  
BEEF BUSINESS**

# KEMIN RUMINANT PRODUCT PORTFOLIO

## KemTRACE<sup>®</sup> CHROMIUM



**KemTRACE<sup>®</sup> Chromium** is a highly bioavailable, organic source of chromium that helps improve glucose utilization for increased cellular energy and function. This results in better **animal maintenance, growth, and immunity**.<sup>1</sup>

### HOW KemTRACE CHROMIUM WORKS

**ACTIVATES INSULIN RECEPTORS** ➤ **MORE GLUCOSE ENTERS CELL** ➤ **MORE ENERGY AVAILABLE**

## CLOSTAT<sup>®</sup>

**CLOSTAT<sup>®</sup> is a *Bacillus subtilis* with efficacy proven through large pen commercial data.**<sup>2</sup> Through enhanced intestinal health, CLOSTAT improves overall health and performance of beef cattle.

### Healthy Cattle = Healthy Closeouts



INTESTINAL  
HEALTH



IMMUNE  
SYSTEM HEALTH



ANIMAL  
HEALTH

### Feed quality

#### ANTIOXIDANTS

ENDOX<sup>®</sup> dry antioxidant  
ENDOX<sup>®</sup> 5X Concentrate dry antioxidant  
NATUROX<sup>®</sup> Premium liquid antioxidant  
NATUROX<sup>®</sup> Plus dry antioxidant  
RENDON<sup>®</sup> AT 20 liquid antioxidant  
RENDON<sup>®</sup> AET liquid antioxidant  
RENDON<sup>®</sup> CQ liquid antioxidant

#### FORAGE PRESERVATIVES

FRESH CUT<sup>®</sup> Plus liquid hay preservative  
Silage SAVOR<sup>®</sup> Plus liquid silage preservative

#### MOLD INHIBITORS

Ammo CURB<sup>®</sup> dry mold inhibitor  
Ammo CURB<sup>®</sup> liquid mold inhibitor  
Myco CURB<sup>®</sup> dry mold inhibitor  
Myco CURB<sup>®</sup> liquid mold inhibitor  
SHIELD<sup>®</sup> Granules dry calcium propionate  
Ultra CURB<sup>®</sup> liquid mold inhibitor  
Ultra CURB<sup>®</sup> dry mold inhibitor

#### SURFACTANTS

MillSAVOR<sup>™</sup> liquid surfactant  
MillSAVOR<sup>™</sup> Concentrate liquid surfactant

### Pathogen control

#### ANTIMICROBIAL

KEM SAN<sup>®</sup> liquid antimicrobial

### Nutrition

#### TRACE MINERALS

KemTRACE<sup>®</sup> Chromium trace mineral  
KemTRACE<sup>®</sup> Chromium-OR OMRI Listed<sup>®</sup> trace mineral  
KemTRACE<sup>®</sup> Zinc OMRI Listed<sup>®</sup> trace mineral

#### ENCAPSULATES

LysiGEM<sup>™</sup> Extend encapsulated source of lysine  
KESSENT<sup>™</sup> Me encapsulated source of methionine  
CholiGEM<sup>™</sup> encapsulated source of choline

#### ENERGY

NutroCAL<sup>™</sup> 100 gluconeogenic

#### BIOSURFACTANT

LYSOFORTE<sup>®</sup> Extend dry biosurfactant

### Gut health

#### ACTIVE MICROBIALS

CLOSTAT<sup>®</sup> active microbial  
CLOSTAT<sup>®</sup> 500 active microbial  
CLOSTAT<sup>®</sup> Green organic-compliant active microbial

#### ANTI-CAKING AIDS

KALLSIL<sup>®</sup> zeolite anticaking aid

#### PHYTOGENIC

Aleta<sup>™</sup> 1,3-beta glucan

#### REFERENCES:

1. B. C. Bernhard, et al. (2012)
2. Word, A.B., et al. (2022).