



AletaTM Flex

IMMUNE MODULATOR FOR OPTIMAL
POULTRY HEALTH

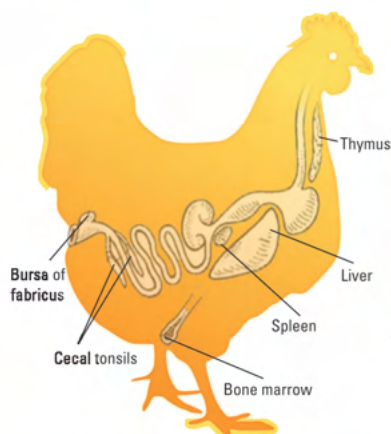
BUILD IMMUNITY
BOOST PERFORMANCE



INSPIRED MOLECULAR SOLUTIONSTM



Basic factors in Poultry farming

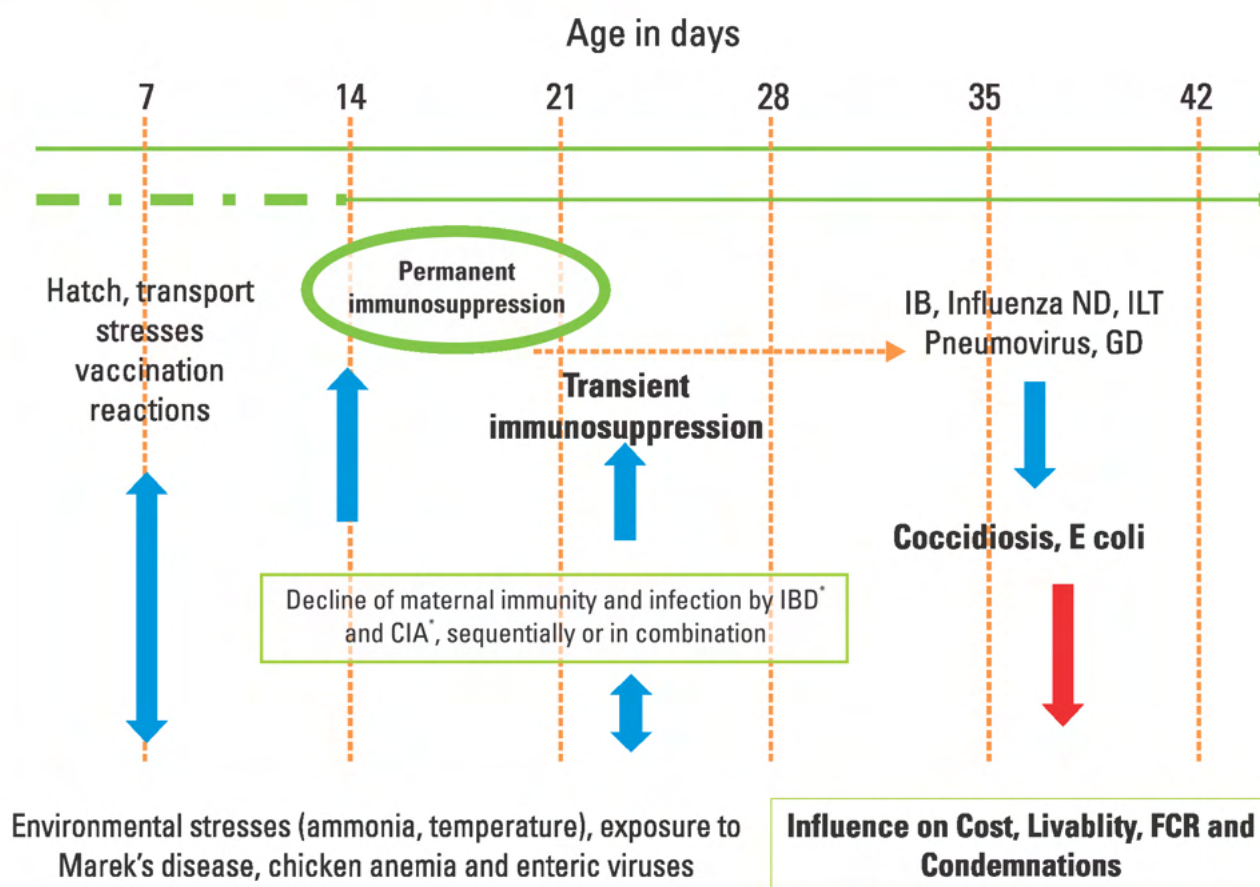


There are four basic factors essential to develop good immunity and to get maximum productivity in commercial poultry farming.



Despite improved management practices and the availability of vaccinations against infectious diseases in chickens, there are still outbreaks within the industry because of high immune challenges resulting in economic loss costing billions of rupees.

Immunosuppressive Interaction in Broilers



*IBD-Infectious Bursal Disease *CIA-Chicken Infectious Anemia

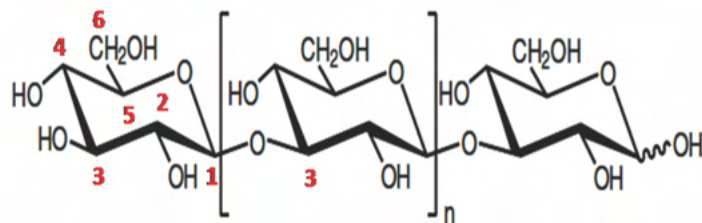
Ref: K A Schat and M A Skinner, 2014

Immune Priming

We need to think beyond basic factors when immune challenges are very high, i.e **Immune Priming** which means keeping the innate or non specific immune system always on alert against disease causing pathogens.

Aleta™ means Immune response

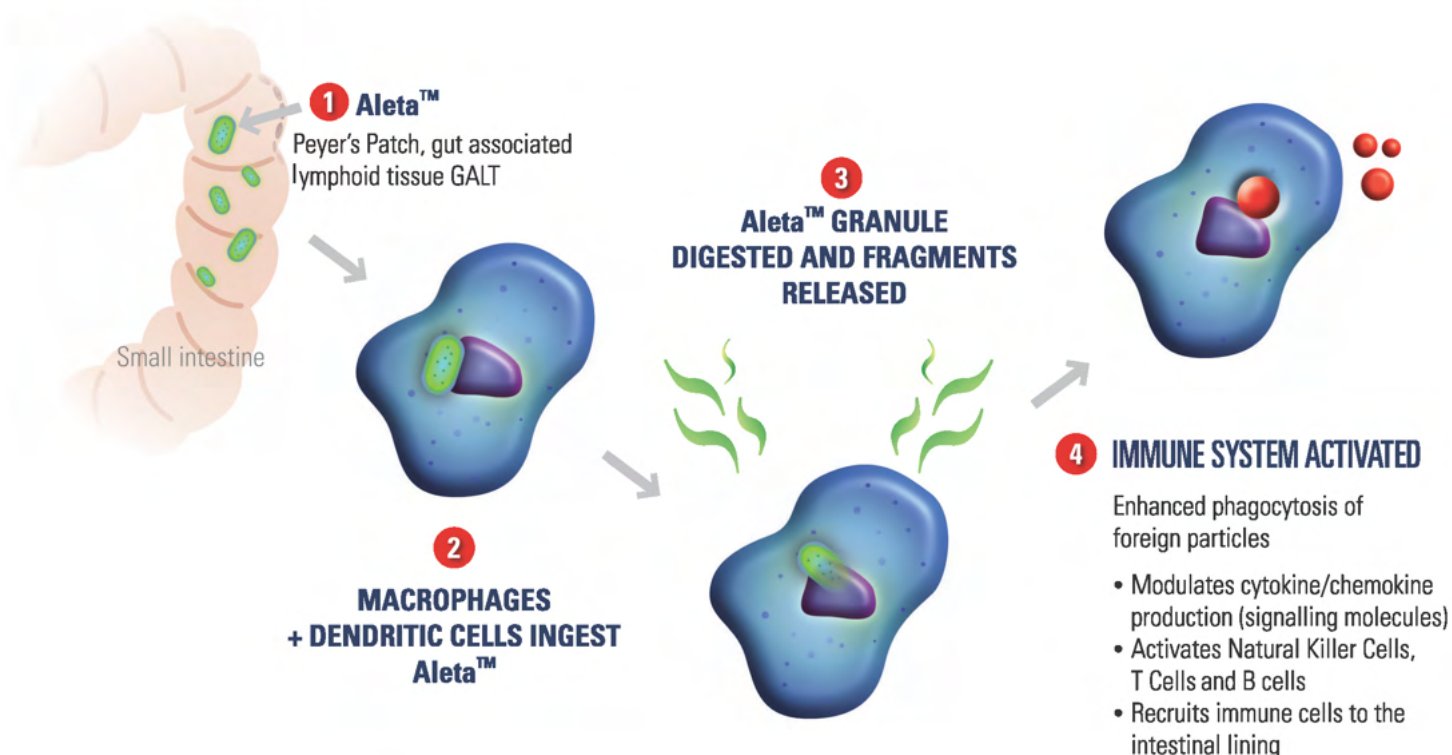
Aleta™ is the latest generation, potent linear 1, 3 β glucan from algal source (*Euglena gracilis*) in the market today. Aleta™ is a highly bioavailable immunomodulator offering to improve immunity and poultry performance.



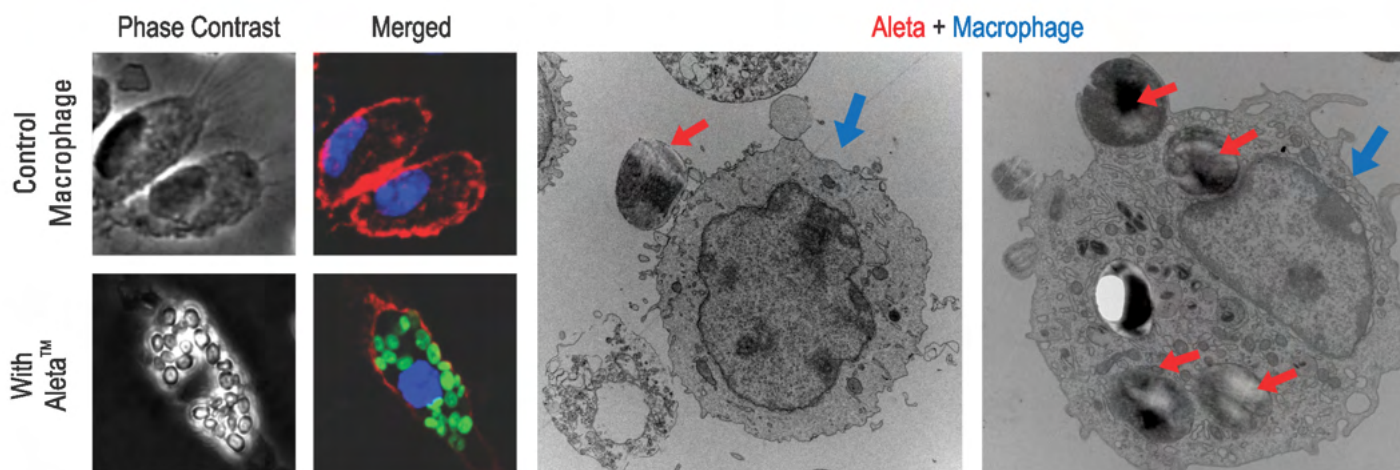
Aleta™ Mode of action

Aleta™ has a clear mode of action at the molecular level. In contrast, many different components of competitor products make their mode of action less clear

Schematic illustration



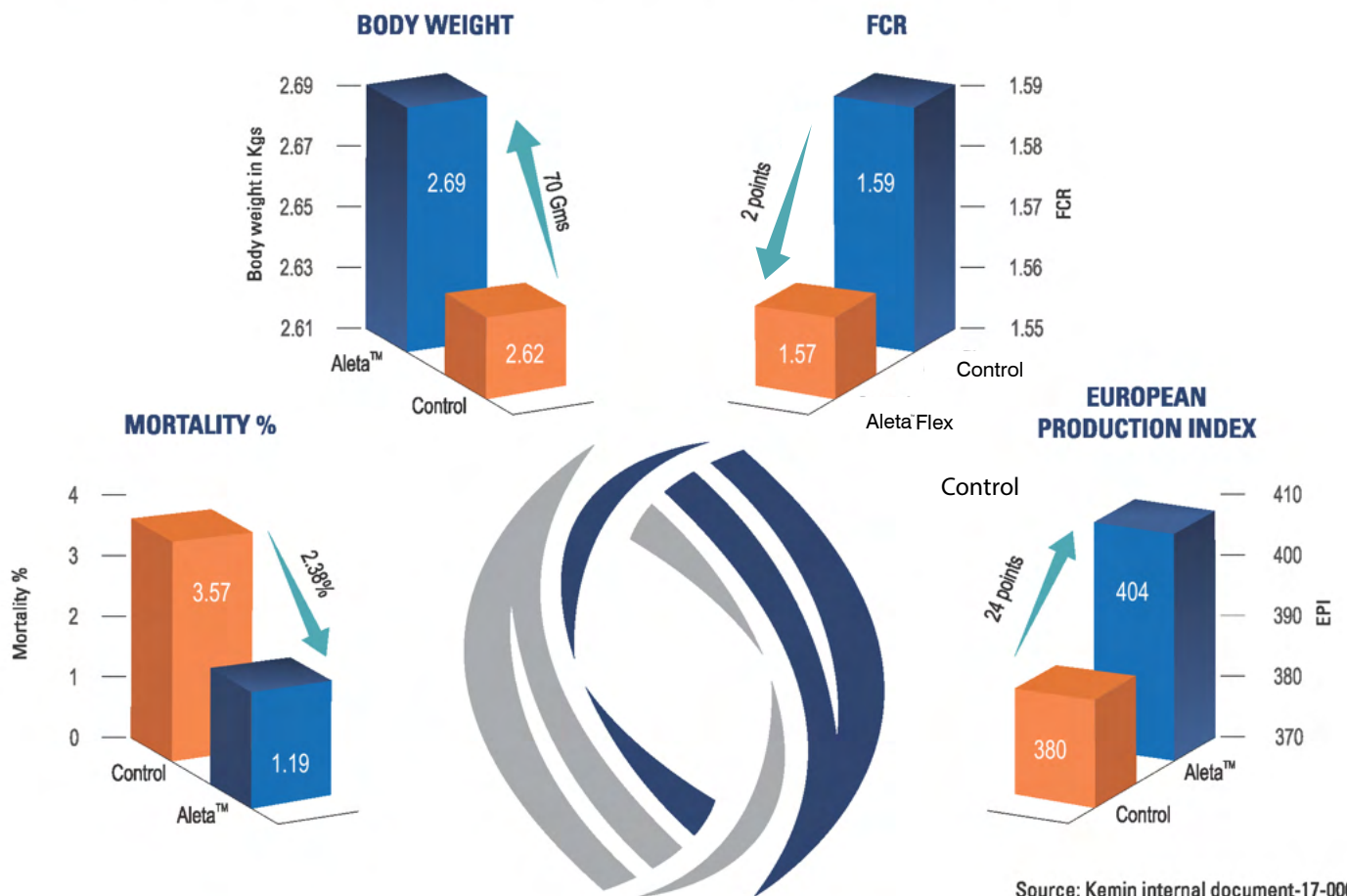
Microscopic illustration



Mouse macrophages were incubated with and without Aleta™ for 2 hours, unbound particles were washed away and incubated for 72 h and stained for macrophage marker before imaging by confocal microscopy.

Aleta™ Commercial Performance Study

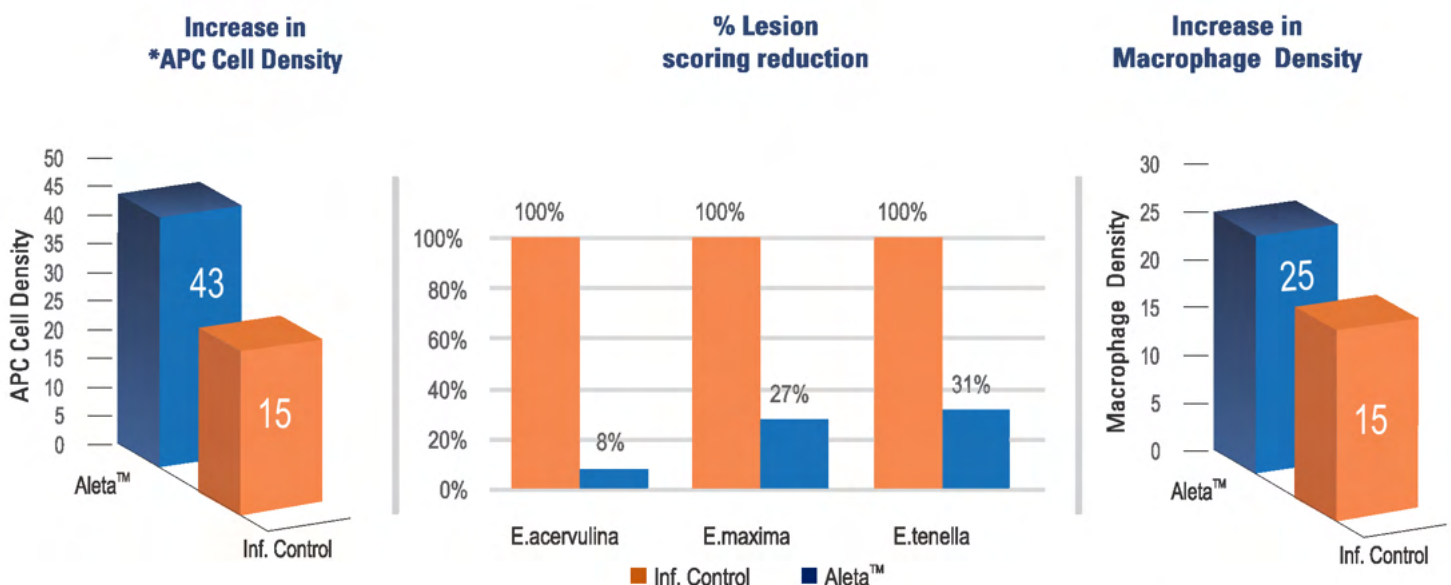
- Aleta™ supplemented diet had 50gm higher body weight, 2 point better FCR, 2.38% lower mortality and 24 point higher European Production Index in Broilers.
- Also improved immunoglobulin levels seen: 12.75% higher IgG & 6.49% higher IgA



Source: Kemin internal document-17-00036

Aleta™ Challenged Study

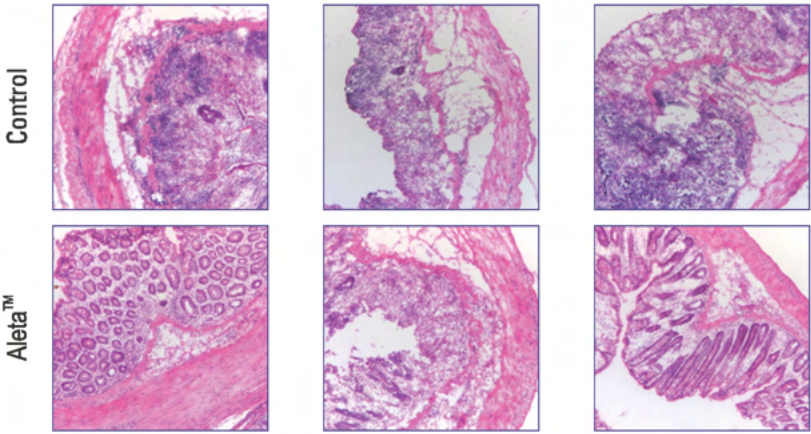
- Aleta™ works synergistically along with anticoccidial.
- Aleta™ could enhance recruitment and activation of Dendritic cells and Macrophages



*APC-Antigen Presenting Cell

Source: Kemin internal document-17-00239

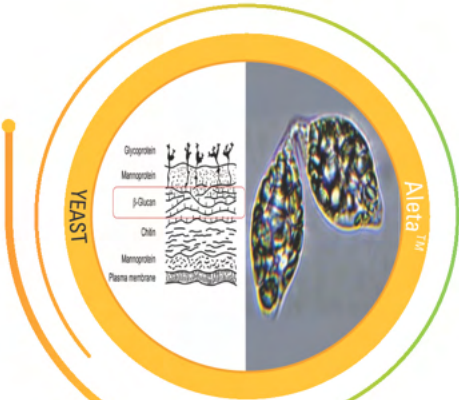
Aleta™ lowers inflammation



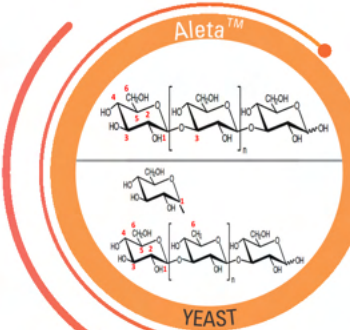
Animal receiving Aleta™ had significantly lower colonic inflammation compared to Animal in the negative control group

Source: Kemlin internal document-17-00035

Aleta™ Features

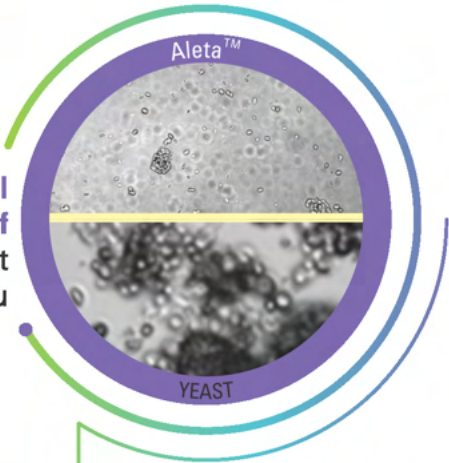


Aleta™ sourced from *Euglena gracilis* has **Cytosolic expression** where as Yeast has Cell wall expression

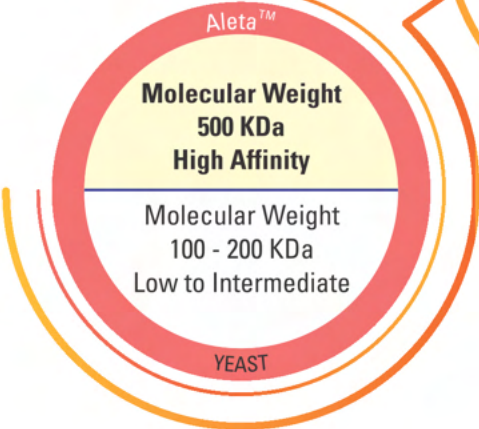


Aleta™ has **Over 90% as linear 1,3 form** but yeast form has 1,3 with 1,6 side branches

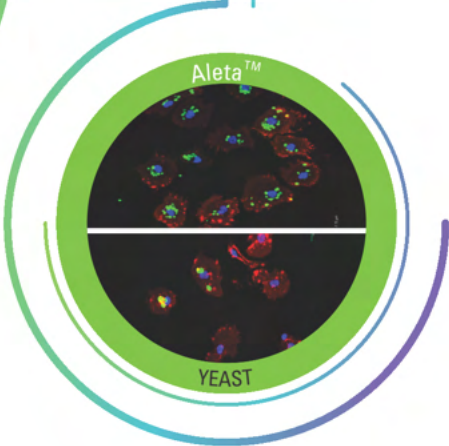
Aleta™ has **Ideal particle size of 1-3 μ** but yeast form has > 10 μ



Aleta™ has **Better affinity** to immune cells



Aleta™ has **better bioavailability**



Aleta™ Manufacturing Facility



Aleta™ Benefits



Usage directions

Recommended in Broilers, Breeders and Layers during immune and stress challenges

Aleta Flex : 500g / MT of feed

Packaging : 25 kg

Aleta : 100 g/ MT of feed

Packaging : 25 kg



INSPIRED MOLECULAR SOLUTIONS™



Kemin Industries South Asia Private Limited
#C-3, 1st street, Ambattur Industrial Estate, Chennai, 600058, INDIA Phone: 044 4220 2800
E mail : mail.india@kemin.com Web : www.kemin.com

© Kemin Industries, Inc. and its group of companies 2020 all rights reserved. ®™ Trademarks of Kemin Industries, Inc., USA

