

GARLIC OIL-BASED TECHNOLOGY

AlliCURB™ MAX is a unique garlic oil-based contact insecticide that controls and/or repels pests such as Lepidoptera (adults, larvae), spotted wing drosophila, and small soft-bodied insects such as whiteflies and aphids on all crops. AlliCURB MAX acts as an odor-masking compound to confuse pests during mate pairing, deters egg laying on treated crops, and is a feeding deterrent. AlliCURB MAX does not leave a garlic taste on food crops. In addition, AlliCURB has a 0-day preharvest interval (PHI) and has a 0-hour restricted entry interval (REI).

SMART BLEND • PROPRIETARY FORMULATION

ACTIVE INGREDIENTS:

- Castor oil.....27.00%
- Garlic oil..... 8.00%

OTHER INGREDIENTS:

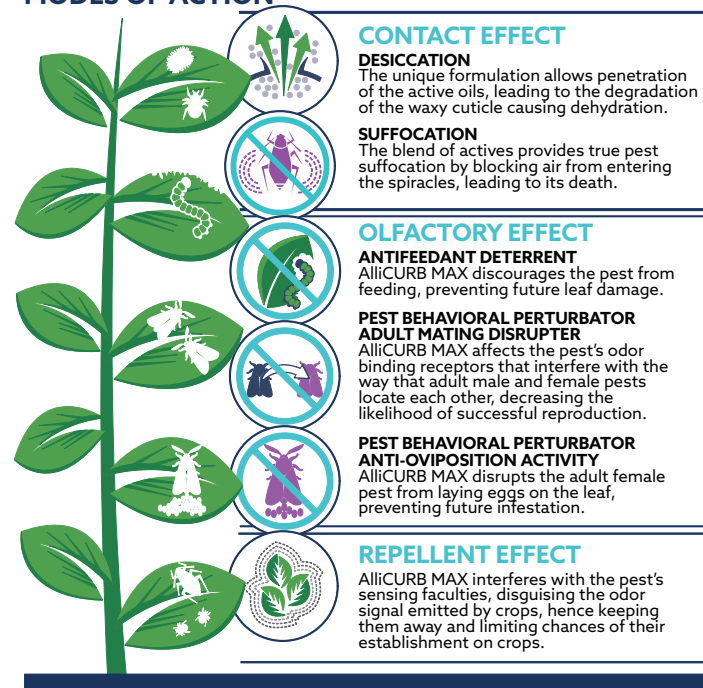
Glycerol Monooleate, Sorbitol, Isopropyl Myristate, Butyl Lactate, Lauric Acid, Myristic Acid, Palmitic Acid, Stearic Acid, Oleic Acid.

- Premium botanical oils highly-screened for their unique profile, delivering multiple modes of action for an effective and consistent product performance. The castor oil works as a carrier to enhance the activity of the garlic oil.
- Emulsifiable concentrate containing an adjuvant useful for maximum spray coverage and effective delivery of the active ingredients to the target site.

TARGET PESTS CONTROLLED

Provides control of various pest species such as Lepidoptera (adults, larvae), spotted wing drosophila, and small soft-bodied insects such as whiteflies and aphids. Target lepidopteran pests early in their life cycle (1st - 3rd instars) for best results.

MODES OF ACTION



WHEN USED AS DIRECTED



Convenient to Use



Workers Safety



MRL Exempt



No Sensory Impact



Minimal PPE



No Phytotoxicity Observed



Excellent Pest Resistance Management Tool



Environmentally-Friendly



DIRECTIONS FOR USE

Integrated Pest Management Program



ALWAYS READ AND FOLLOW LABEL DIRECTIONS | SHAKE WELL BEFORE USE | CONCENTRATE PRODUCT, MUST BE DILUTED BEFORE USE | USE DILUTION IMMEDIATELY | DO NOT STORE DILUTED SOLUTION

MIXING INSTRUCTIONS:

- Can be used alone or tank mixed
- The use of adjuvants is not required
- AlliCURB™ MAX is compatible with commonly used pesticides. A jar test for compatibility and phytotoxicity is recommended before use. Follow the strictest label directions.

APPLICATION METHOD - FOLIAR SPRAY:

Use standard clean commercial sprayers, backpacks, or other hand-held sprayers. The product works on contact. For best results, spray the leaves' surface with a sufficient volume and with adequate pressure to achieve uniform and complete coverage on the top and bottom of the foliage until runoff.

APPLICATION TIMING:

AlliCURB MAX does not have label restrictions or limitations on the number of applications per season, and the number of consecutive applications before rotating to a chemical with different modes of action.

- Begin application when pest pressure is expected or when pests first appear.
- Do not wait until plants are heavily infested
- Apply in the early morning or late afternoon
- Do not apply to plants under stress or when the temperature is 90°F or above.

PACKAGING SIZES: 2.5 gallons (case of 2).

USE SITES:

For use on all agricultural crops. Indoor and outdoor crops including to all fruits and vegetables, orchards, fruit trees, nuts, grapes, hops, greenhouses, nurseries, ornamentals, hemp and landscapes.



Preventative Approach



Anytime in the Season



RECOMMENDED APPLICATION RATES (PER ACRE)

- A minimum of 100 gallons of finished solution to treat one acre is recommended.

PREVENTATIVE (< Economic Threshold)	MODERATE PRESSURE (At Economic Threshold)	HIGH PRESSURE (> Economic Threshold)
0.125%	0.25%	0.375-0.5%
16 fl. oz./100 gal	32 fl. oz./100 gal	48-64 fl. oz./100 gal

TREATMENT INTERVAL: For best results, use in an IPM program with a minimum of 2-3 applications over a 2-week interval (5 to 7 days treatment interval).



Follow us @kemincroptechnologies

FIFRA 25(b) Exempt: This product has not been registered by the United States Environmental Protection Agency. Kemin Industries, Inc. represents that this product qualifies for exemption from registration under the Federal Insecticide, Fungicide, and Rodenticide Act. Certain statements may not be applicable in all geographic regions. Product labeling and associated claims may differ based upon regulatory requirements. The product is not registered or authorized for sale in all states. Consult your Kemin representative or state regulatory representative for approval of this use in your state, specific applications, and labeling.

© Kemin Industries, Inc. and its group of companies 2023. All rights reserved. ©™Trademarks of Kemin Industries, Inc., USA.

Learn more at
kemin.com/allicurbmax