



# FERTILIZER 2-1-0.2

## PRIME SOIL WITH A NOVEL PLANT GROWTH TECHNOLOGY

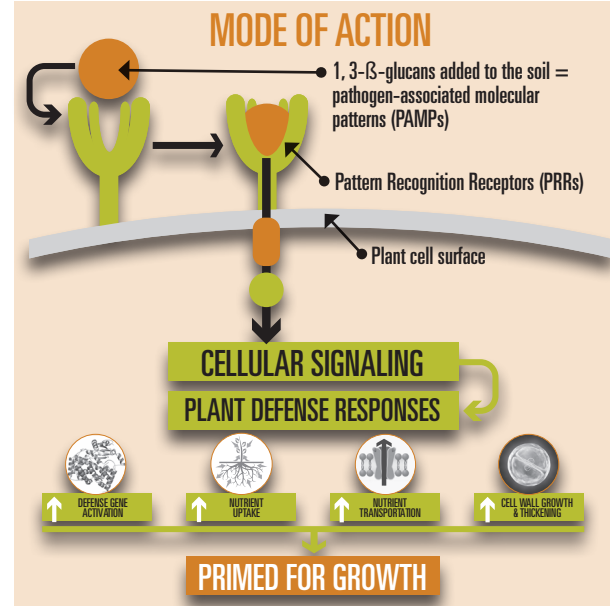
At Kemin, we believe that maximizing the potential of the growing environment in which a plant grows is a more robust approach to plant health. Valena™ dry powder is a new generation of OMRI-Listed® fertilizer to prime the growing media with a unique source of 1,3 B glucan material derived from Kemin's sustainable microalgae *Euglena gracilis*. Valena top dressed or amended to the soil at seedling or transplant results in higher plant quality, higher crop yield, and help with earlier transplants. Valena upgrades the nutritional program to help growers reach their farming potential.

## UNIQUE SUSTAINABLE MATERIAL

### Guaranteed Analysis:

Beta-Glucan	>50%
Total Nitrogen (N)	≥2%
Total Phosphorus (P <sub>2</sub> O <sub>5</sub> )	≥1%
Total Potassium (K <sub>2</sub> O)	≥0.2%

- Derived from Kemin's proprietary strain of whole dried unicellular micro algae called *Euglena gracilis*
- In-house production: *E. gracilis* fermented under controlled environment for higher paramylon yields
- Paramylon: Unique carbohydrate storage molecule made of pure 1,3-β-glucan.



Supply soil with ingredients to support plant growth



Helps increase nutrient uptake efficiency



Aids in the growth of strong and thriving plants from the start



Helps increase fruit and vegetable marketable yield



May help to reduce the application of traditional fertilizers or biostimulants



Designed to fit in plant's nutritional program



Help get plants ready earlier for transplant

## NUTRITIONAL PROGRAM

Dry granular powder form, easy to incorporate into your growing media at the beginning of a plant's life cycle: Valena™ is not water soluble, do not include in an irrigation system.



TOP DRESS

### RATE

One application at 1.5 g/L of growing media

### APPLICATION TIMING

- At seedling or establishment phase (transplanting)

### DIRECTION FOR USE

- 1) Sprinkle desired rate on the top of the growing media, around the base of the growing plant
- 2) Follow by normal irrigation practices to hydrate and distribute the product into the growing media
- 3) Sub irrigation is not recommended for this type of application.



SOIL INCORPORATED

### RATE

One application at 1.2 kg/cubic yard of growing media

### APPLICATION TIMING

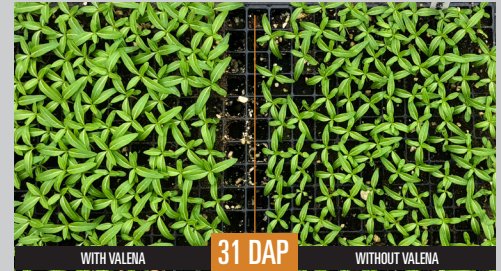
- Prior to seedling or planting

### DIRECTION FOR USE

- 1) Incorporate desired rate of dry granular to soil or growing media
- 2) Mix thoroughly until completely dispersed.

**PACKAGE SIZE:**  
25 Kg bag.

## VALENA™ HELPS PLANTS BE HEALTHIER LOOKING AND READY FASTER



Visual differences of vinca planted the same day with Valena (left) and without Valena (right)



Visual differences of yellowish and dry looking tomato planted without Valena (control, right) vs. greener and fuller looking tomatoes planted ten days after the control with Valena (left).

(SOURCE: SD-19-21092)

Always read and follow label directions. Valena is not registered, or authorized for sale in all states. Certain statements may not be applicable in all geographic regions. Product labeling and associated claims may differ based upon regulatory requirements. Consult your Kemin representative or your state regulatory representative for approval of this use in your state, specific applications and labeling.